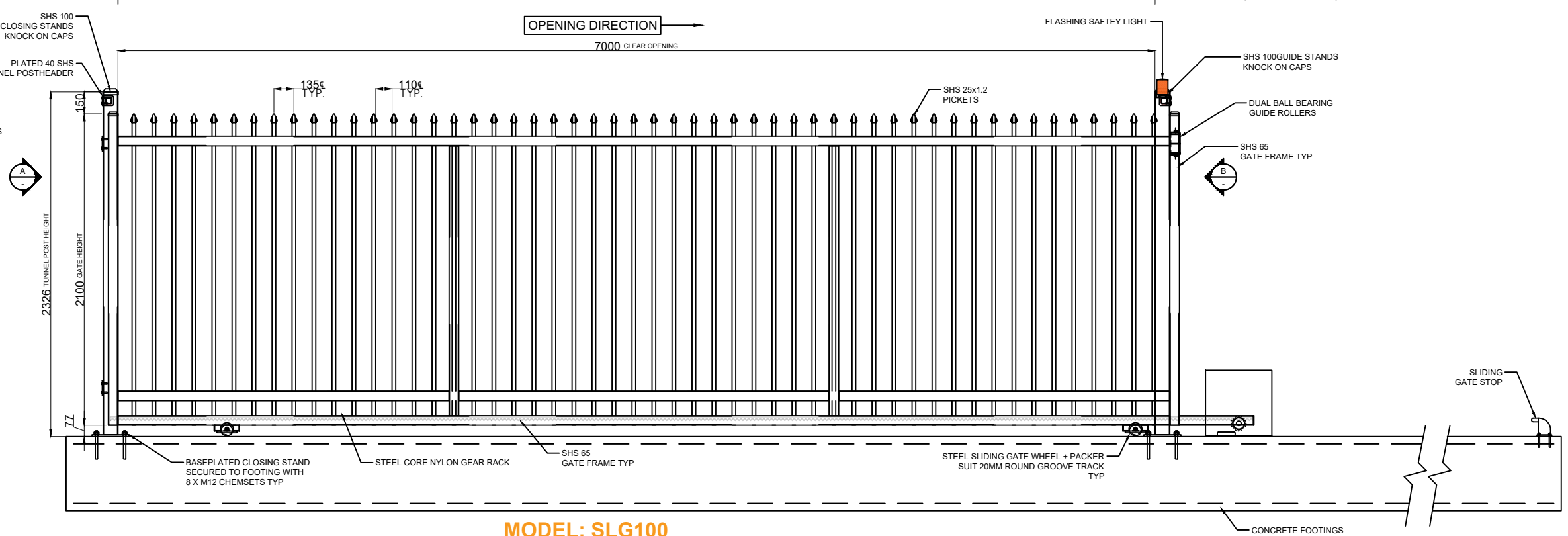
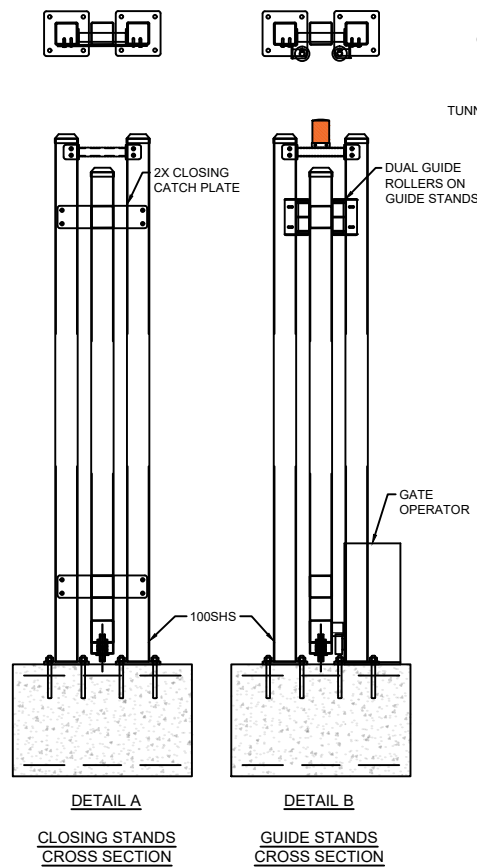
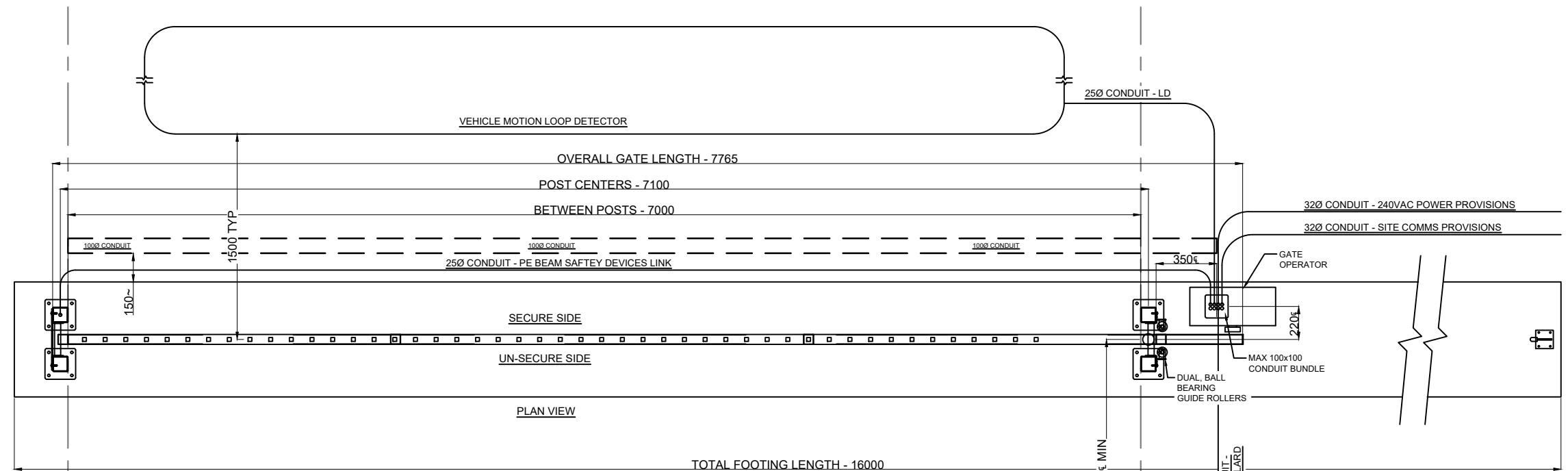


**SLG100 -
SLIDING GATE**

NOTE:
-Gate and Footings to be Engineered
as per site requirements
-16 Metres Total length required for
Gate installation and Operation
(7m Configuration)



**MODEL: SLG100
7M SLIDING GATE**
FRONT VIEW



This drawing includes the principles of design and is submitted by **Ideal Industries Pty Ltd** with the agreement that it not to be reproduced, copied or loaned in part or whole. It is not to be used in any manner that may constitute a detriment directly or indirectly to **Ideal Industries Pty Ltd** Acceptance of this drawing will be constructed as an agreement to the above.

Ideal Industries Pty Ltd
3 Narang Place
St Marys, NSW - 2760
Telephone: (02) 9675 4448
Email: sales@idealgates.com.au

Dwg No: 7M SLG100 GATE - GA		
Drawn: JG	Checked: JWR	Approved: SJR
Date: 13/12/2024	Scale: NTS	

**SLG100 SLIDING GATE
GENERAL ARRANGEMENT**

A/O No: 00000
Sheet: 1/1
Rev: A